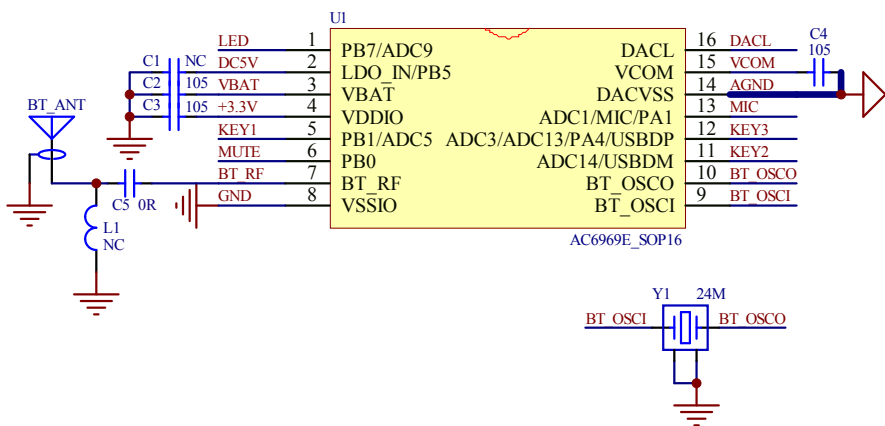
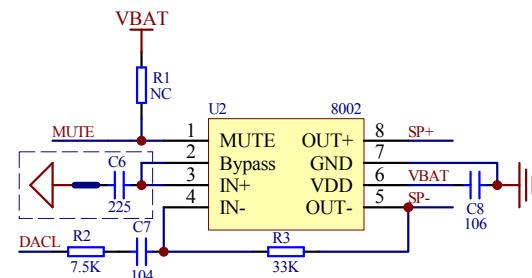


杰理方案咨询(QQ号:371116160, 邮箱:sales@yunthinker.com)

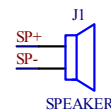
- 备注:
- 1、VBAT, LDO\_IN必须使用耐压值为16V的原装电容。
  - 2、VDDIO, VBAT必须使用原装电容, 以防漏电。
  - 3、没有备注耐压值的电容, 统一用耐压值6.3V的电容



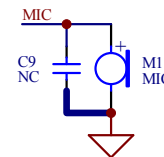
MCU



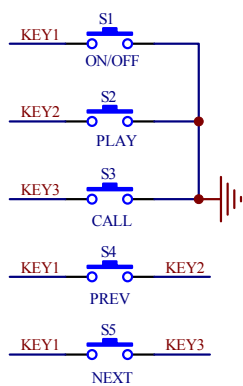
功放bypass电容需接AGND, 然后回到主控VCOM退耦电容DACVSS处



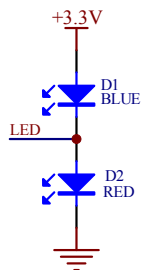
SPEAKER



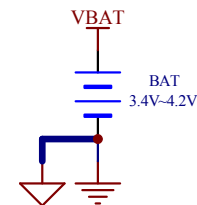
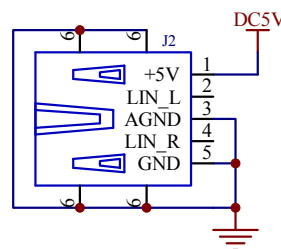
PA、MIC



KEY



LED



- 备注:
- 1、AGND从主控DACVSS处单独走线到电池地短接, 走线要尽量宽。
  - 2、电池必须带保护板, 或带保护电路。

POWER